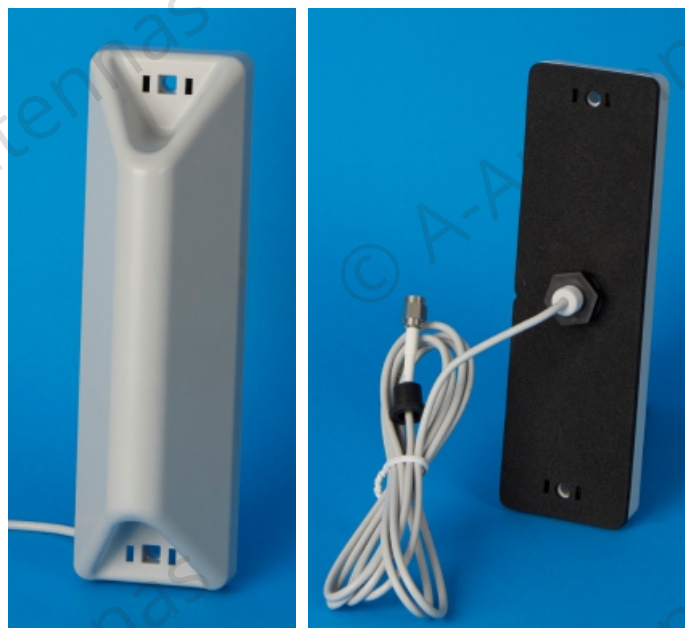


Frequency band	791-862MHz (B20), 1710-1880MHz (B3)
Max Gain	B3 <6.0 dBi
	B20 <6.2 dBi
VSWR*	<3:1
Radiation efficiency	B3 >-2.5dB (>56%)
	B20 >-3dB (>50%)
Impedance	50Ω
DC shorted	Yes
Radiation pattern	Omni-directional
Polarization	Linear
Maximum power	>10W
Cable**	AA100 Low loss
Cable color**	Grey
Cable length**	1.5m
Connector**	MCX male RA (90°)
Mounting	Center screw
IP Class	IP66
ROHS/WEEE/CE Compliant	Yes
Temperature range	-40°C to +85°C
Max humidity	RH 95% non condensing
Wind resistance	>100km/h
UV protection	>10years
Product lifetime	>15years
Size	L 160mm, W 48mm, H 45mm
Weight	125g
Antenna color	Grey
RF cable color	Grey

* The total efficiency and VSWR is depending on materials in the near field of the antenna and size/shape of GND. The values in the specification are typical values

** Other cable lengths and connector available on demand



Mounting instructions

Mount the antenna with suitable screws with flat underside. Screws thicker than the mounting hole might damage the antenna.

Note that the cable is sensible for squeezing and sharp bends. Minimum bending radius R10.

The antenna can be mounted directly on metal (like a metal cabinet), wooden and plastic surfaces and in free space on a pole.