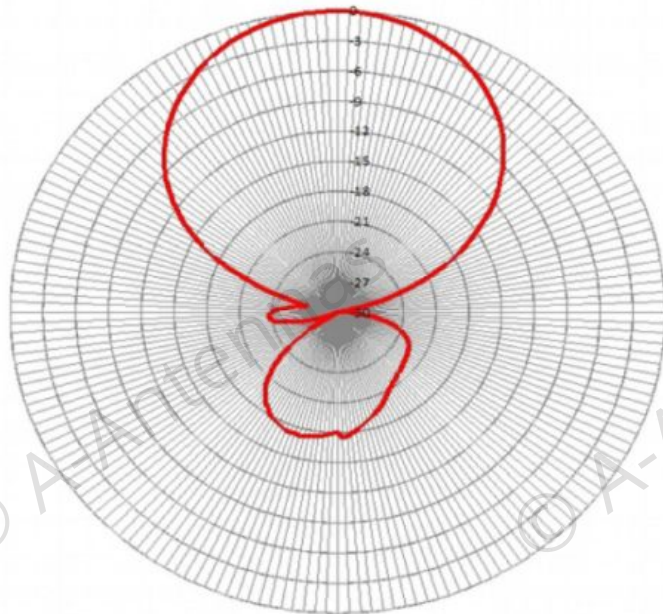
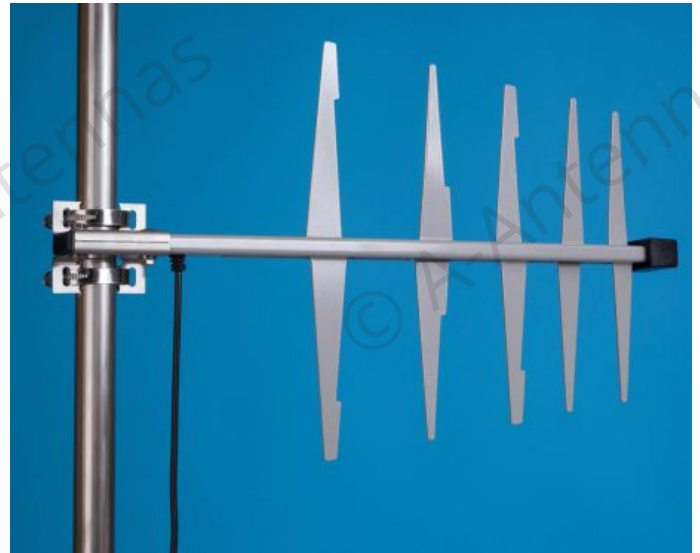


Frequency	410-480MHz
Gain*	7dBd (≈9dBi)
VSWR*	<1.5:1
Polarization	Linear (V or H)
Opening angle	E: 80°, H:60°
Antenna type	Logperiodic
Cable**	RG223 super low loss
Cable length**	3m/5m/10m
Connector**	N/SMA
Wind resistance	>180km/h
Material	Aluminum, ABS and PC
Material bracket	Stainless steel

\* The total efficiency and VSWR is depending on materials in the near field of the antenna and size/shape of GND. The values in the specification are typical values

\*\* Other cable lengths and connector available on demand



VSWR

